

# Join Our Experts



**22 June 2021 | 13:30 – 15:45**

**Elena Sossenkina**

*Special Session on Risk Informed Decision Making for Levees and Flood Defences*



**23 June 2021 | 16:00 – 17:30**

**Paul Risher**

*Special Session: Life Loss Assessment*

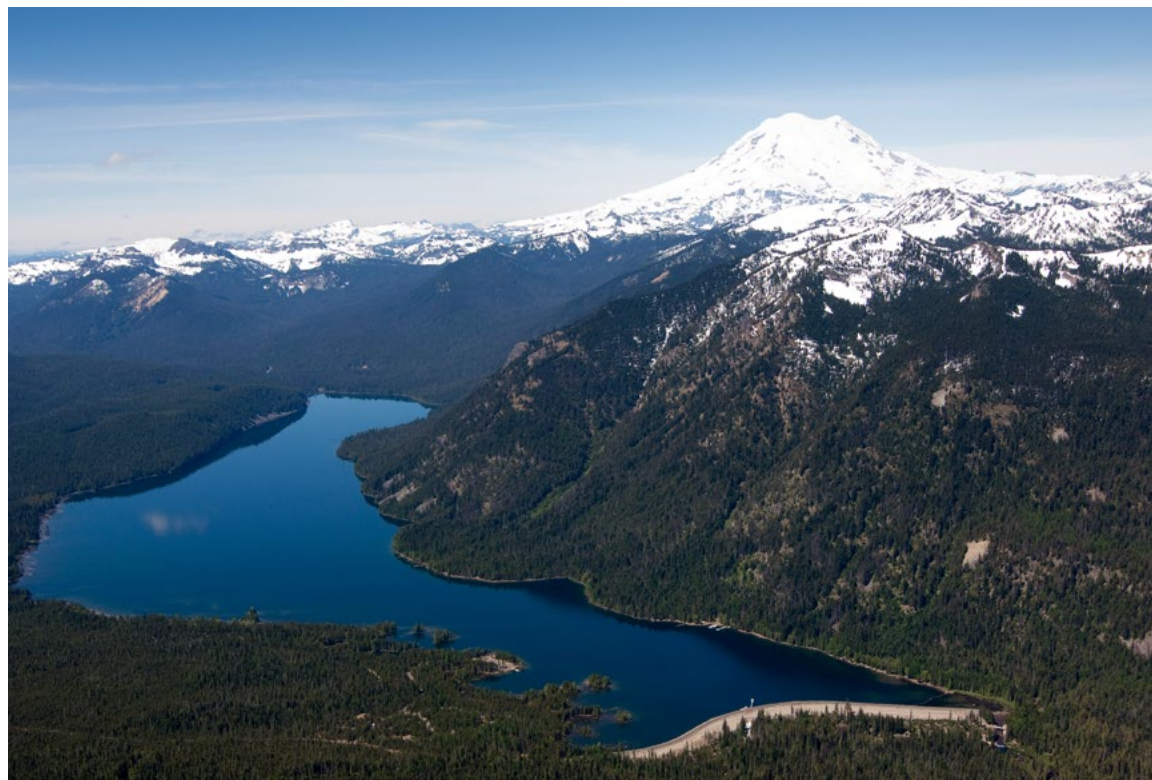




# Our Services



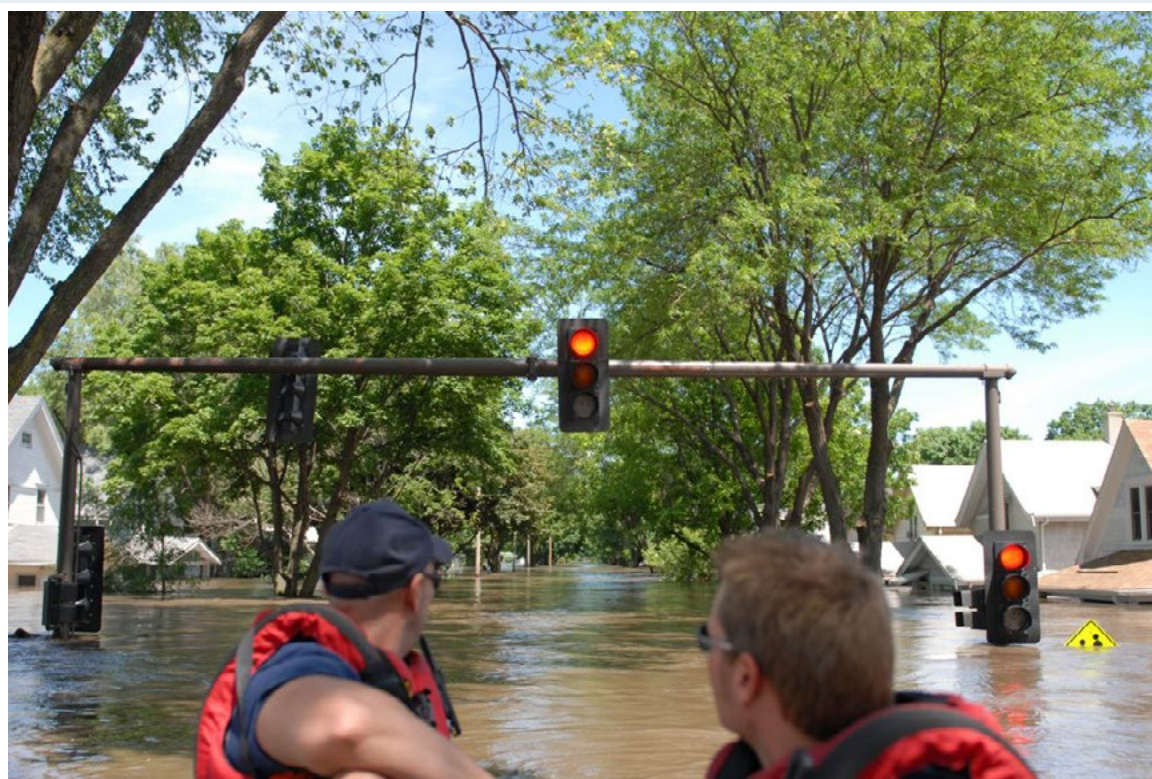
Levees and Flood Defences  
Engineering, Design and Construction



Integrated Water Management



Climate Adaptation Solutions



Consequences Modeling and  
Flood Damage Assessment



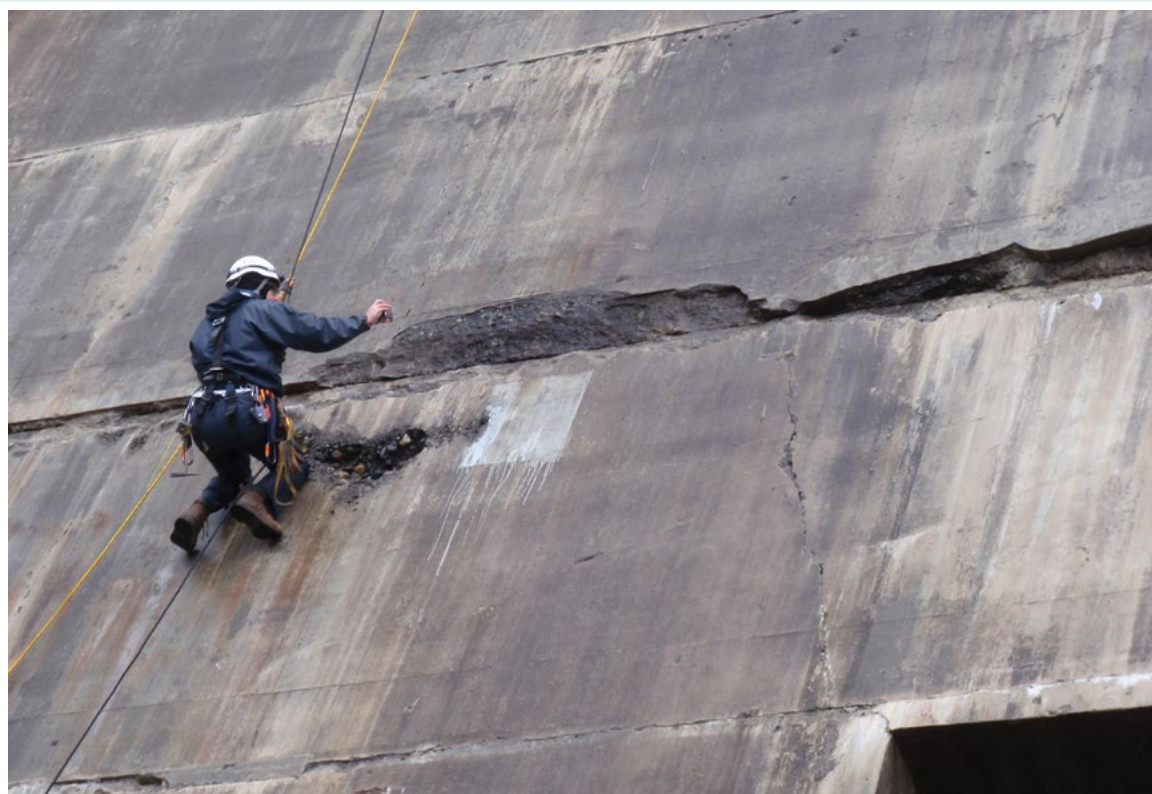
Risk Informed Decision Making



Strategic Communications



Policy and Program Consultancy



Asset Management